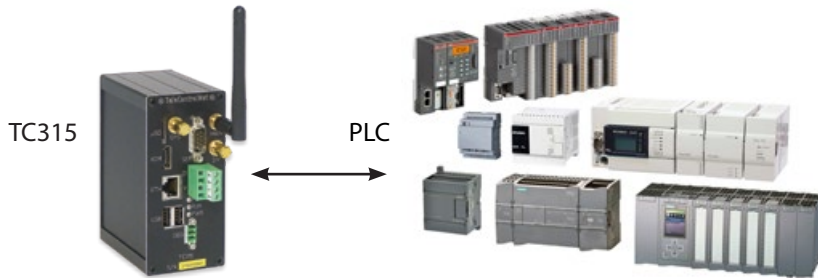


Datasheet TeleController TC315



► Introduction

The TC315 is a medium sized TeleController in a series of Remote Terminal Units (RTU) that Inter Act has developed for telemetry over internet. It can be used stand alone or it can be connected to a private and secured domain in TeleControlNet. TeleControlNet is a Software as a Service (SaaS) for WEBscada and WEBmes applications.



► Main functions

The TC315 enables controlling and monitoring of remote processes and machines. This TeleController is the gateway between the local process controller (e.g. PLC) and the internet or TeleControlNet.

The TC315 can communicate real time with virtually any existing process controller. This connection does not require any change of the existing software on the local process controller. The connection with TeleControlNet can be realized via a mobile 3G/4G APN Network or DSL.

The TC315 performs three major tasks:

1. It locally stores process data.
2. It receives remote user controls to be submitted to the local process controller.
3. It sends process alarms in real time to TeleControlNet.

► Main features

- Single board Arm processor for 35 mm DIN rail mounting, including internal 3G/4G modem.
- Applicable in PLC control systems as HMI (WEBscada) terminal.
- Can also be supplied without WEBscada software.

Soc

- NXP i.MX6 based Solo SOM Cortex A9 @ 1 GHz

System memory

- 512 MB DDR3

Supported frequency bands

- Dual-Band TDD-LTE B38/B40
- Five-Band FDD-LTE B1/B3/B7/B8/B20
- Dual-Band UMTS/HSDPA/HSPA+ B1/B8
- Dual-Band GSM/GPRS/EDGE900/1800 MHz

Max connectivity speeds

- TDD-LTE/FDD-LTE
 - Uplink up to 50 Mbps
 - Downlink up to 100 Mbps
- HSPA+
 - Uplink up to 5.76 Mbps
 - Downlink up to 42 Mbps
- UMTS
 - Uplink
 - Downlink up to 384 kbps
- EDGE Class:
 - Max. 236.8 kbps (DL), Max. 236.8 kbps (UL)
- GPRS
 - Max. 85.6 kbps (DL), Max. 85.6 kbps (UL)
- CSD
 - GSM data rate 14.4 kbps
 - WCDMA data rate 57.6 kbps

External I/O

- 2 x 3G/4G antenna (Main + Diversity)
- 1 x 10/100/1000 Ethernet (Limited to 470 Mbps)
- 1 x GPS antenna
- 1 x RS232
- 1 x HDMI
- 2 x USB 2.0

- **Real Time Clock (RTC) with onboard battery**

Dimensions

- Height: 120 mm (4.7")
- Width: 56 mm (2.2")
- Depth: 106 mm (4.2")

Weight

- Approximately 372 g

Supply voltage

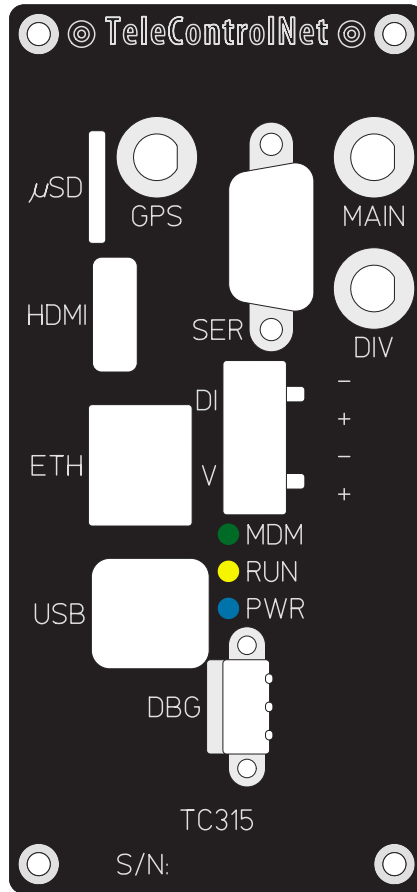
- 10 to 30 V DC

Supply current

- 124 mA @ 24 V ~ 3 W

Temperature

- Operating: 0 to 70 °C



Inter Act industrial automation B.V.

Dijkgraafweg 16, 7336 AT Apeldoorn - P.O. Box 1011, 7301 BG Apeldoorn - The Netherlands
Tel.: +31 (0)55 534 2002 - Fax: +31 (0)55 534 2010 - www.interact.nl - info@interact.nl

Copyright © 2019 Inter Act industrial automation B.V. All Rights Reserved.

The information in this document is subject to change without prior notice in order to improve reliability, design and function and does not represent a commitment on the part of the manufacturer.

In no event will the manufacturer be liable for direct, indirect, special, incidental or consequential damages arising out of the use or inability to use the product or documentation, even if advised of the possibility of such damages.

This document contains proprietary information protected by copyright. All rights are reserved. No part of this manual may be reproduced by any mechanical, electronic or other means in any form without prior written permission of the manufacturer.